

INTEGRAL SMART



INTEGRAL SMART

For some standard versions the Integral is also available as a smart version in 100, 125 and 150 mm diameters with a reduced load capacity. An additional 100 mm diameter option offers an extremely low overall height of 130 mm.

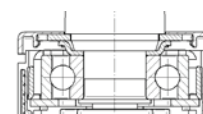


Housing versions



<div> <div>i</div> <div>Description</div> </div>	Housing type	Swivel castor	Swivel castor with central total or directional lock	Swivel castor with central total lock
	Acticle description	1040	1044	1046
	Frame material	Pressed steel	Pressed steel	Pressed steel
	Housing cover material	Synthetic	Synthetic	Synthetic
	Swivel bearing	Precision ball bearing	Precision ball bearing	Precision ball bearing
	Washable*	● **	● **	● **
<div> <div>↻</div> <div>Swivel interference</div> </div>	Wheel Ø 100 mm	180 mm	180 mm	180 mm
	Wheel Ø 125 mm	195 mm	195 mm	195 mm
	Wheel Ø 150 mm	230 mm	230 mm	230 mm
	Wheel Ø 200 mm	-	-	-

Swivel bearing




Precision ball bearing for best manoeuvrability.

Items with this sign "●" are available. Items with this sign "-" are not available in our standard range. Please contact us.

* Washable versions with sealed wheel precision ball bearing. Washable castors must be sealed in the fitting area by the customer.

** Just castors in diameter 100 mm are washable.

Wheel versions



Description	Product name	Maxtech	Maxtech	Maxtech conductive	Maxtech conductive
	Article description	UAP	UAX	XSP	XSX
	Tread material	Polyurethane	Polyurethane	Polyurethane	Polyurethane
	Tread hardness	Shore D 42	Shore D 42	Shore D 40	Shore D 40
	Wheel body material	Polyamide	Polyamide	Polyamide	Polyamide
	Temperature range	-30 °C / +80 °C	-30 °C / +80 °C	-30 °C / +80 °C	-30 °C / +80 °C
	Width of tread	32 mm	32 mm	32 mm	32 mm
	Electric conductive (10 ⁴ OHM)	-	-	●	●
	Washable*	-	●	-	●
Bearing type	Plain bearing	-	-	-	-
	Roller bearing	-	-	-	-
	Cone ball bearing	-	-	-	-
	Precision ball bearing	●	● Sealed	●	● Sealed
Load capacity**	Wheel Ø 100 mm	100 kg	100 kg	100 kg	100 kg
	Wheel Ø 125 mm	135 kg	-	135 kg	-
	Wheel Ø 150 mm	135 kg	-	135 kg	-
	Wheel Ø 200 mm	-	-	-	-

Items with this sign "●" are available. Items with this sign "-" are not available in our standard range. Please contact us.

* Washable versions with sealed wheel precision ball bearing. Washable castors must be sealed in the fitting area by the customer.

** Load capacity according to DIN 12531.

Swivel bearings



Precision ball bearing for highest performance.



Load capacity

The load capacity depends on the housing and wheel. It has been tested and fulfills the requirements according to EN 12531 at a speed of 4 km/h. When using four castors, calculate the necessary load capacity as follows: The weight of the application plus the additional load divided by three castors.

$$\frac{\text{Weight of application} + \text{load}}{3} = \text{Load capacity of one castor}$$

Fitting versions

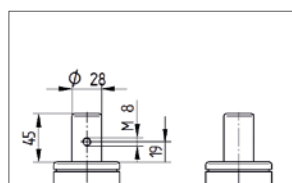


<div>i</div> <div>Description</div>	Fitting type	Solid stem	Solid stem with central total lock or central total and directional lock	Solid stem	Solid stem with central total lock or central total and directional lock	Solid stem with central total lock or central total and directional lock
	Article description	R05-28	R26-28	R05-32	R36-32	R36-34
	Shape	Round	Round	Round	Round	Round with octagonal profile
	Thread for fixation screw	M8	4 x M8	M6	4 x M6	-
	Thread position from bottom	19 mm	19 mm	7 mm	7 mm	-
	Solid stem \varnothing	28 mm	28 mm	32 mm	32 mm	32 mm
	Solid stem length	45 mm	96 mm	45 mm	50 mm	51 mm
	Shifting angles	-	30° or 45°	-	30° or 45°	30° or 45°
	Spring type for actuation torques	-	Soft, standard or hard	-	Soft, standard or hard	Soft, standard or hard
<div>↻</div> <div>Overall height</div>	Wheel \varnothing 100 mm	130 mm 139 mm	130 mm 139 mm	130 mm 139 mm	130 mm 139 mm	130 mm 139 mm
	Wheel \varnothing 125 mm	158 mm	158 mm	158 mm	158 mm	-
	Wheel \varnothing 150 mm	183 mm	183 mm	183 mm	183 mm	-
	Wheel \varnothing 200 mm	229 mm	229 mm	229 mm	229 mm	229 mm

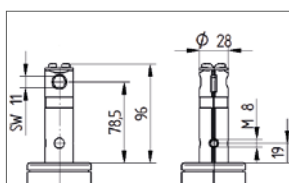
Items with this sign "-" are not available in our standard range. Please contact us.

Technical drawings

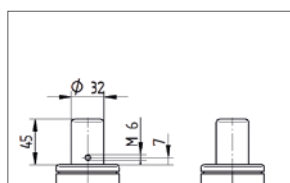
R05-28



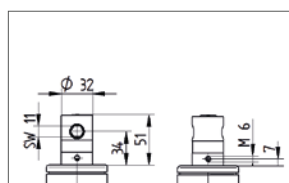
R26-28



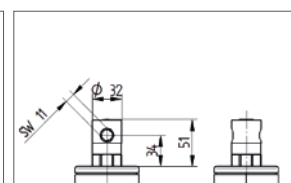
R05-32



R36-32



R36-34



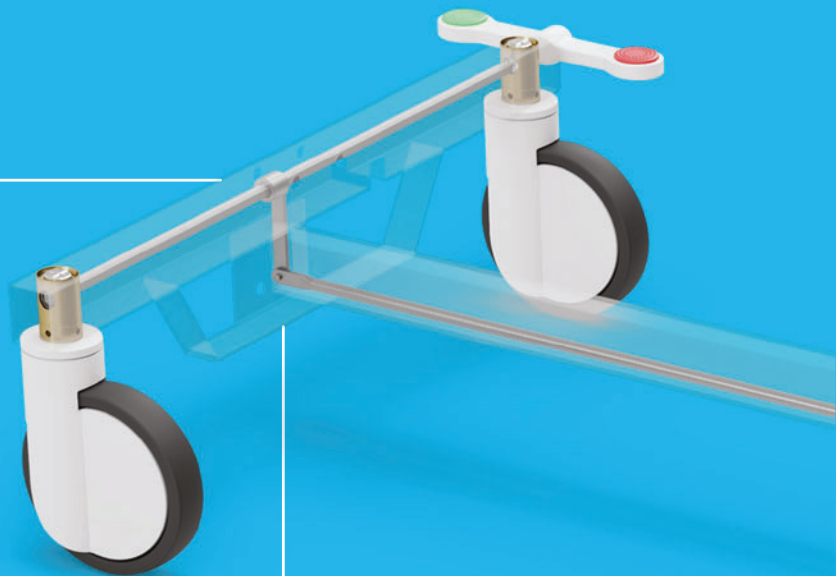
ACCESSORIES FOR CENTRAL LOCKING

Our central locking components offer a practical solution for your needs. Please contact us for further advice.



Change lever

To connect the transmission bar from the foot end to the head end. It is available in three different sizes.

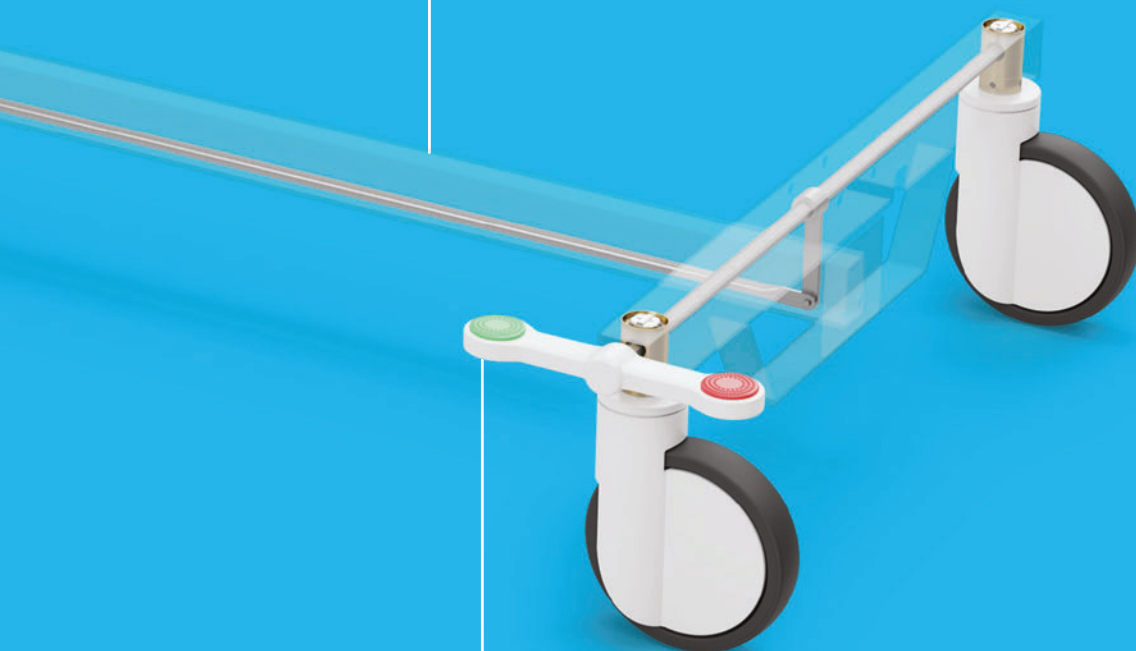


Bearing guide



Profile bar

Available in different lengths,
on request.



TENTE lever

All change levers will be delivered
with a stainless steel screw. They are
available as a single or double lever
for the right and left side. Plugs are
available in different colours.



Optional: adaptor for customer levers

This round adaptor accepts customer
made levers.

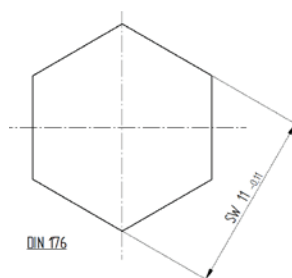
TECHNICAL DATA

ACCESSORIES

Profile bar



i	Article description	Profile bar
	Wrench size	11
	Material	Zinc-plated steel
	Length	On request



TENTE levers



Description	Change lever type	Double lever	Lever	Lever
	Article description	Double lever	Lever	Lever 180
	Compatible with product	30° or 45°	30° or 45°	30° or 45°
	Material	Fibre-glass-reinforced polyamide	Fibre-glass-reinforced polyamide	Fibre-glass-reinforced polyamide
	Version	Left version Right version	Left version	Right version
	Width	41,5 mm	41,5 mm	41,5 mm
	Length	191,5 mm	95,75 mm	95,75 mm

Standard lever colours

More colours on request.

 RAL 7035

 Eloxal silver

Standard plug colours

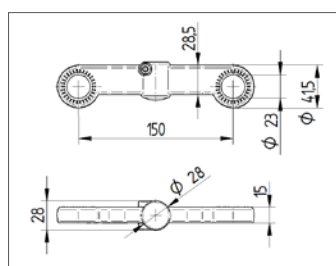
More colours on request.

 RAL 6016

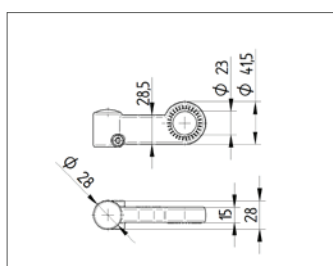
 RAL 3016

 RAL 9011

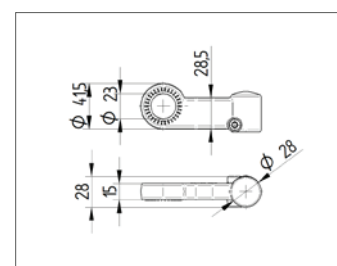
Double lever



Lever



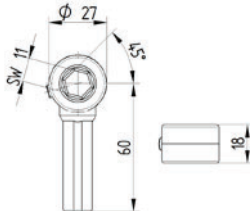
Lever 180



Adaptor for customer levers



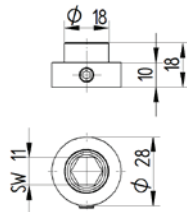
i	Article description	Adaptor
	Wrench size	11
	Material	Zinc die cast



Bearing guide



i	Article description	Bearing guide
	Wrench size	11
	Material	Zinc die cast

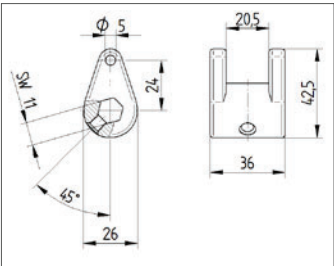


Change lever

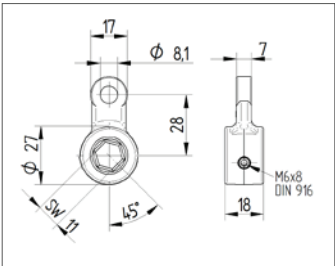


i	Article description	Change lever	Change lever	Change lever
	Wrench size	11	11	11
	Material	Zinc die cast	Zinc die cast	Zinc die cast
	Length	24 mm	28 mm	65 mm

Change lever 24 mm length



Change lever 28 mm length



Change lever 65 mm length

