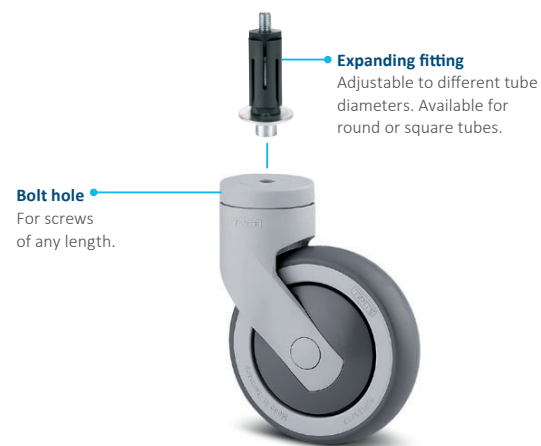


EXPANDING FITTINGS FOR TUBES

Adjustable expanders allow for flexible installation in different tubes.
It is available for all castors with bolt holes in diameter 11 mm.



Technical data and availability

Description	Fitting type	Bolt hole	Expander, round	Expander, square
	Article description	P30	R07	R47
	Expander measurements	-	Ø 19 - 21,5 mm Ø 21,5 - 24 mm Ø 24 - 27 mm Ø 27 - 30 mm Ø 31 - 35 mm	Ø 21,5 - 24 mm Ø 24 - 27 mm Ø 27 - 30 mm Ø 32 - 35 mm Ø 36 - 40 mm
	Bolt hole Ø	11 mm	-	-
	Compatible with bolt hole Ø	-	11 mm	11 mm
Overall height	Wheel Ø 75 mm	-	-	-
	Wheel Ø 100 mm	137 mm	●	●
	Wheel Ø 125 mm	161 mm	●	●
	Wheel Ø 150 mm	190 mm	●	●

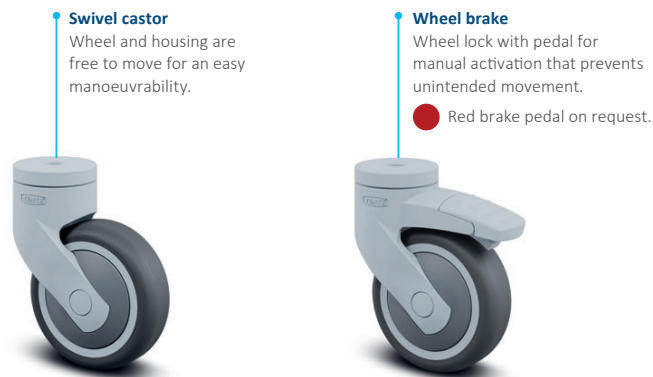
Items with this sign "●" are available. Items with this sign "-" are not available in our standard range. Please contact us.

LEVINA LIGHT



LEVINA LIGHT

The Levina is also available as a "light" version, with a wheel diameter of 75 mm, 100 mm and 125 mm, as well as easy to use plug-in fittings for efficiency.



Housing versions

Description	Housing type	Swivel castor	Swivel castor with wheel brake
	Article description	5220	5225
	Material	Reinforced, glass filled polyamide	Reinforced, glass filled polyamide
	Swivel bearing	Plain bearing	Plain bearing
	Washable	-	-
Swivel interference	Wheel Ø 75 mm	129 mm	146 mm
	Wheel Ø 100 mm	172 mm	196 mm
	Wheel Ø 125 mm	200 mm	200 mm

Items with this sign "-" are not available in our standard range. Please contact us.

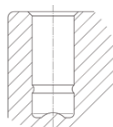


Colour matching

Colours can be matched to the product design. Standard colours:



Swivel bearings



Plain bearing for plug-in fittings.

Wheel versions

Description	Product name	Supratech	Supratech precision
	Article description	PJO	PJP, PJC
	Tread material	Thermoplastic rubber	Thermoplastic rubber
	Tread hardness	Shore A 87	Shore A 87
	Wheel body material	Polypropylene	Polypropylene
	Temperature range	-10 °C / +40 °C	-10 °C / +40 °C
	Width of tread / wheel diameter in mm	25 mm / Ø 75 -	25 mm / Ø 75 32 mm / Ø 100-125
	Thread guard	-	●
Bearing type	Plain bearing	●	-
	Roller bearing	-	-
	Cone ball bearing	-	-
	Precision ball bearing	-	●
Load capacity	Wheel Ø 75 mm	75 kg	75 kg*
	Wheel Ø 100 mm	-	82 kg
	Wheel Ø 125 mm	-	82 kg

Items with this sign "●" are available. Items with this sign "-" are not available in our standard range. Please contact us. The mentioned load capacity is only valid for the Levina light product family. The load capacity of a single wheel without housing could be different.

* PJP is available in wheel diameter 75mm and PJC not.



Load capacity

The load capacity depends on the housing and wheel. It has been tested and fulfils the requirements according to EN 12530 at a speed of 3 km/h. When using four castors, you can calculate the necessary load capacity as follows: The sum of the weight of your application plus the additional load divided by three castors.

$$\frac{\text{Weight of application} + \text{load}}{3} = \text{Load capacity of one castor}$$

Fitting versions: Blind hole

For all castors with a blind hole fitting, plug-in fittings are available. These allow for fast and easy assembly.



Technical data and availability

<div><div>i</div><div>Description</div></div>	Fitting type	Blind hole
	Article description	L51-10
	Blind hole Ø / Wheel diameter	10 mm / Ø 75 11 mm / Ø 100-125
	Blind hole Ø / Blind hole depth	10 mm / 25 mm 11 mm / 29,1 mm
<div><div>↻</div><div>Overall height</div></div>	Wheel Ø 75 mm	103 mm
	Wheel Ø 100 mm	136,5 mm
	Wheel Ø 125 mm	160 mm

Items with this sign "n" are not available in our standard range. Please contact us.

Fitting versions: Plug-In threaded stems

For all castors with a blind hole fitting, plug-in threaded stem fittings are available.



Technical data and availability

<div><div>i</div><div>Description</div></div>	Fitting type	Blind hole	Threaded stem	Threaded stem	Threaded stem
	Article description	L51-10	S70	S70	S70
	Threaded stem measurements	-	M8 x 15 mm	M10 x 10 mm M10 x 15 mm M10 x 25 mm M10 x 35 mm M10 x 50 mm	M10 x 78 mm
	Blind hole Ø	10 mm / Ø 75 11 mm / Ø 100-125	-	-	-
	Compatible with blind hole Ø	-	10 mm	10 mm	10 mm
<div><div>↻</div><div>Overall height</div></div>	Wheel Ø 75 mm	103 mm	109 mm	109 mm	112 mm
	Wheel Ø 100 mm	136,5 mm	-	-	-
	Wheel Ø 125 mm	160 mm	-	-	-

Items with this sign "n" are not available in our standard range. Please contact us.
The overall height will vary depending on the height of the fitting you choose. Please contact us for detailed information.

Fitting versions: Plug-In plates

For castors with the blind hole fitting, different plug-in plate fittings are available.



Technical data and availability

Description	Fitting type	     					
		Blind hole	Stem with plate	Stem with plate	Stem with plate	Stem with plate	Stem with plate
		L51-10	P41	P41	P40	P41	P50
		-	38 x 38 mm	42 x 42 mm	60 x 60 mm	65 x 65 mm	77 x 67 mm
		-	27 x 27 mm	32 x 32 mm	48/38 x 48/38 mm	47/42 x 47/42 mm	61,5/56 x 51,5/46,5 mm
		-	5,1 mm	5,1 mm	6,3 mm	6,3 mm	8,5 mm
		10 mm / Ø 75 11 mm / Ø 100-125	-	-	-	-	-
Overall height	Compatible with blind hole Ø	-	10 mm	10 mm	10 mm	10 mm	10 mm 11 mm
	Wheel Ø 75 mm	103 mm	113 mm	115 mm	116,5 mm	115 mm	115 mm
	Wheel Ø 100 mm	137 mm	-	-	-	-	150 mm
	Wheel Ø 125 mm	160 mm	-	-	-	-	173,5 mm

Items with this sign "n" are not available in our standard range. Please contact us.
The overall height will vary depending on the height of the fitting you choose. Please contact us for detailed information.

Fitting versions: Plug-In stems

For all castors with a blind hole fitting, different plug-in collar stem fittings are available to help ensure a faster assembly.



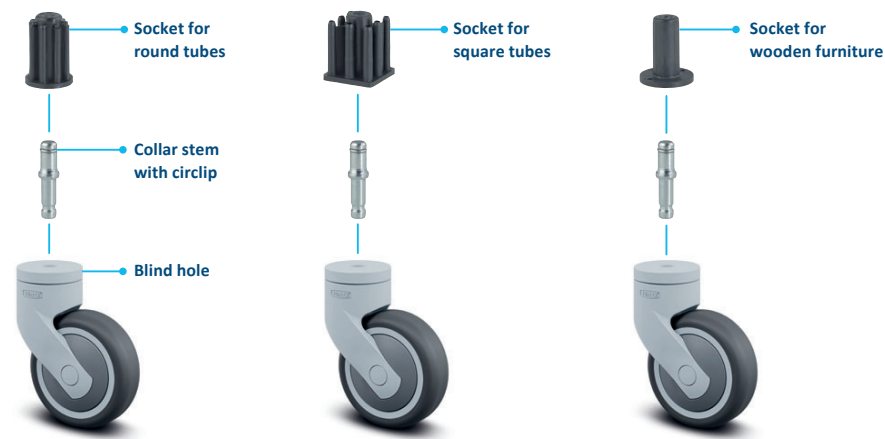
Technical data and availability

Description	Fitting type	Blind hole	Stem with circlip	Collar stem with circlip	Collar stem with circlip
	Article description	L51-10	B11	B10	B10
	Stem measurements (Ø x Length)	-	10 x 33 mm	10 x 20 mm 11 x 20 mm 11 x 30 mm	9 x 24 mm
	Blind hole Ø	10 mm / Ø 75 11 mm / Ø 100-125	-	-	-
	Compatible with blind hole Ø	-	10 mm	10 mm	10 mm
Overall height	Wheel Ø 75 mm	103 mm	103 mm	108 mm	107 mm
	Wheel Ø 100 mm	137 mm	-	-	-
	Wheel Ø 125 mm	160 mm	-	-	-

Items with this sign "i" are not available in our standard range. Please contact us.
The overall height will vary depending on the height of the fitting you choose. Please contact us for detailed information.

Fitting accessories: Sockets

The plug-in collar stem fittings can be used with different sockets for an easy and solid assembly under different applications.



Technical data and availability

Description	Tube type	Round socket for tubes	Square socket for tubes	Round socket for wooden furniture
	Article description	R20	R40	H40
	Compatible with product	B10 11 x 30 mm	B10 11 x 30 mm	B10 11 x 30 mm
	Socket Ø / collar Ø	14/18 mm 15/18 mm 16/18 mm 17/19 mm 18/20 mm 19/21 mm 20/21 mm 22/25 mm 23/26 mm	16/20 mm 17/19 mm 18/20 mm 21/23,5 mm 22/24,5 mm 23/25,5 mm 26/30 mm	15 mm
	Overall height	36 mm	36 mm	36 mm