

LINEA

5925XSP075L51-10 RAL7001

EAN 4031582399134

Swivel castor with wheel brake, housing made of Polyamide, with blind hole fitting. Wheel centre made of Polyamide, electric conductive, tread made of Polyurethane, with threadguards, precision ball bearing



BETTER MOBILITY. BETTER LIFE.



Picture may differ from original product

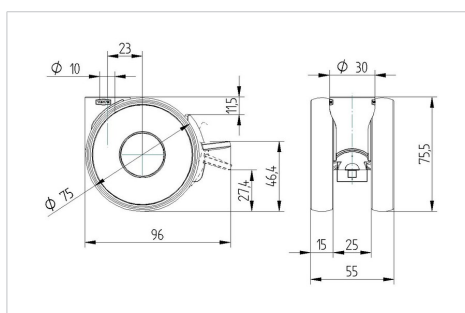
Technical Data

Wheel diameter	75 mm
Wheel width	15 mm
Castor width	55 mm
Centre hole	10 mm
Dome-Ø	30 mm
Offset	32 mm
Swivel Interference	162 mm
Overall height	75.5 mm
Temperature	- 10 / + 40 °C
Standard	EN 12528
Weight	0.199 kg
Swivel Radius	81 mm
Load capacity	100 kg
Load capacity (static)	200 kg

Advantages at a glance

Roll performance	● ● ● ○ ○
Movement noise	● ● ● ○ ○
Attrition	● ● ● ○ ○
Corrosion resistance	● ● ● ● ○

Dimensions



Structure & Mounting

